

# CPCCWHS1001- Prepare to work safely in the construction industry LLN Assessment

It is important to us that we are responsive to your needs as learner so you can successfully complete the course and assessment. You must have minimum LLN skills to be able to complete the course and the assessments.

This LLN Self-Assessment Tool is designed to assess the core skills of learning, reading, writing, oral communication and numeracy required to complete the course successfully.

## Instructions to students

The tasks in this LLN Assessment are similar to the types of tasks that you will need to complete as part of the course that you are intending to enroll into. It will help us identify any areas where further support may be required.

This is not a test and it is not counted towards your overall results. It is designed to help your trainer to identify any areas where you may need further assistance or support in your training.





This LLN Assessment should take approximately 10 minutes to complete.

## Instructions

- Please read each question carefully and then answer them as fully as possible
- Please do not leave any spaces blank or questions unanswered
- Do not accept any help from another person
- It is in your best interest please be honest!

Family Name:	
Given Name:	
Course Name	
Date :	Day/Month/Year    ____ / ____ / _____
Email Address:	
Do you speak a language other than English at home?	<input type="radio"/> No English only <input type="radio"/> Yes, other – please specify _____
Assessor Name	
Assessor Recommendations	

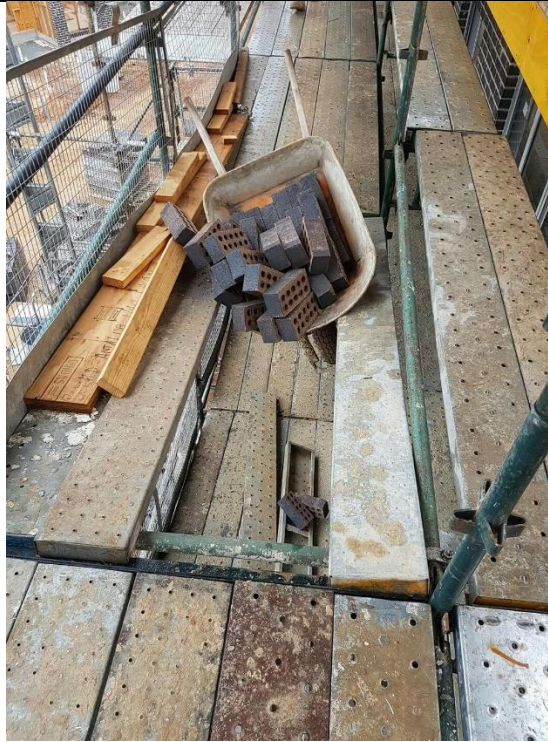
**Activity 1: Describe the meaning of each sign below?**

**Activity 2: In an emergency you will hear 3 loud sirens and you will be required to evacuate to the emergency assembly area and wait for further instruction. Your supervisor will give you further information. Select the correct answer(s):**

A	In an emergency you will hear one loud siren
B	In an emergency you will be required to evacuate to the assembly area
C	In an emergency you should evacuate and then await further instructions from your supervisor
D	When you hear the emergency siren you should wait until you receive further instruction from your supervisor

**Activity 3: You are working on a construction site and notice the following:**



Describe the incident above in writing?	
How would you make sure the are is safe?	
Who do you need to report this incident to?	